

Data Sheet

# J. M. CANTY F700 SERIES

Flanged Sight Flows



Supplied by

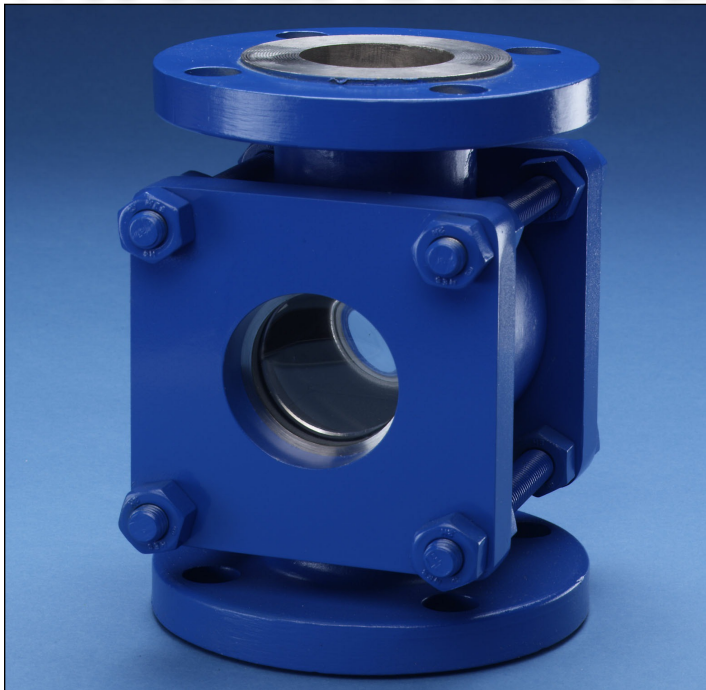
**247able.com**

Call us on +44 (0)118 916 9420 | Email [info@247able.com](mailto:info@247able.com)

# CANTY

## PROCESS TECHNOLOGY

### F700 SERIES FLANGED SIGHT FLOWS



#### THE CANTY ADVANTAGE

J.M. Canty F700 series flanged sight flows have been engineered to meet all your process and piping needs. Our sight flows have been designed to meet strict ASME code requirements. Canty hydro-tests all units to 150% of the maximum rated pressure and can provide certification of material and testing if required, typical of ASME code requirements for process vessels.

#### UNMATCHED SAFETY, RELIABILITY

All Canty sight flows feature the Fuseview™ window. Our unique fused glass windows far exceed all conventional tempered glass windows in safety and performance. By fusing glass to metal, a high pressure, high safety, hermetic seal is formed. This fused glass technology ensures safety with every F700 series sight flow. What's more, our windows can easily be removed for cleaning. Canty windows do not have to be discarded, as do traditional tempered glass windows. Canty fused glass windows can be re-used again and again.

#### FEATURES

- All sight flows feature Canty Fuseviews™
- Castings, designed to ASME code
- Connections per ANSI 16.5 and BS EN 1092-1
- Stainless steel, carbon steel, and Hastelloy® bodies and Fuseviews™
- Teflon® lined sight flows are available
- 150 LB through 2500 LB, PN10 through PN100
- Special pressures though 10,000 PSI

#### UNIQUE OPTIONS

- Dual fused glass option – for high temperature applications
- Lighting – 90 degree lighting to illuminate your Process without eliminating a sight glass
- Optional camera or interface sensor – to remotely view and control your process

#### FEATURES OF THE FUSEVIEW™

- *Models feature FM approved windows !*
- Extremely high strength due to radial compression on the hermetically sealed glass
- Eliminates chance of catastrophic failure due to bolt-up
- Very high impact strength due to prestressing
- Manufactured in nickel plated carbon steel, Stainless steel, or high corrosion resistant Hastelloy®
- Certification on material and pressure rating is available, typical of ASME code requirements

#### CANTY FUSEVIEWS™ vs. OTHERS

- No bolt loading on the glass. All loading is carried by the fusing ring
- The Fuseview™ sight glass allows the use of standard process gasketing. No special gaskets are required
- No loss of glass temper over time !
- Canty Fuseviews™ may be removed for cleaning and inspection. This is not allowed with ordinary glass, due to residual stresses incurred at bolt-up

#### INDICATORS

Canty F700 series flanged sight flows are available with various indicator options, including:

- No indicator
- Rotor
- Flapper
- Drip Tube

**CANTY**

JM Canty Inc | Buffalo, NY USA  
JM Canty Intl Ltd | Dublin, Ireland

Ph: (716) 625 4227  
Ph: + 353 (01) 882 9621

Fax: (716) 625 4228  
Fax: +353 (01) 882 9622

[www.jmcanty.com](http://www.jmcanty.com)

Document P/N: TA7461-1 Rev 7

All Registered Trademarks are the property of their respective owners.

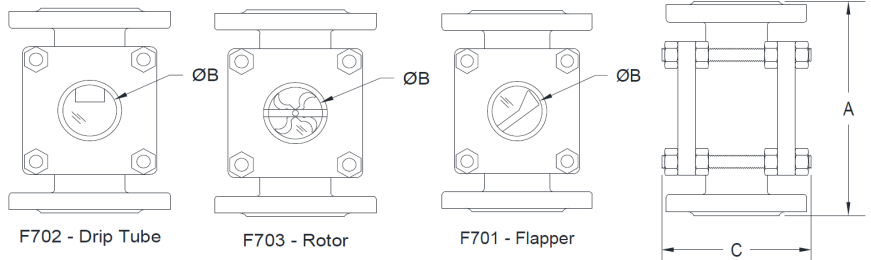
# F700 SIGHT FLOW INDICATOR SPECIFICATIONS

150# / PN10 / PN16

SIZE	A	ØB	C
1/2" / 15 mm	7.5" [190.5mm]	1.13" [28.7mm]	4.25" [108mm]
3/4" / 20 mm	7.88" [200.2mm]	1.13" [28.7mm]	4.25" [108mm]
1" / 25 mm	5.63" [143mm]	1.13" [28.7mm]	4.38" [111.3mm]
1.5" / 40 mm	6.5" [165.1mm]	1.5" [38.1mm]	6.25" [158.8mm]
2" / 50 mm	7.88" [200.1mm]	2.13" [54.1mm]	7.0" [177.8mm]
2.5" / 65 mm	9.38" [238.3mm]	3.0" [76.2mm]	7.9" [200.7mm]
3" / 80 mm	9.38" [238.3mm]	3.0" [76.2mm]	7.9" [200.7mm]
4" / 100 mm	11.0" [279.4mm]	4.0" [101.6mm]	9.5" [241.3mm]
6" / 150 mm	14.25" [362mm]	6.0" [152.4mm]	13.0" [330.2mm]
8" / 200 mm	16.13" [409.7mm]	7.5" [190.5mm]	15.68" [398.3mm]

\*\*\*For larger sizes, consult factory\*\*\*

F700 - 150# / 300# / PN10 / PN16 / PN25

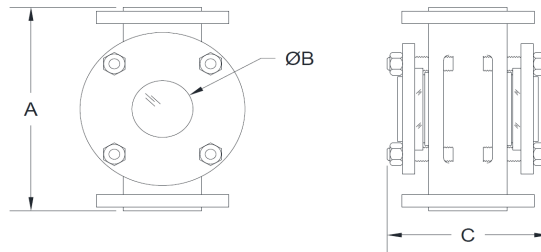


F700TFE - TEFLON LINED - 150#

SIZE	A	ØB	C
1"	7.0" [177.8mm]	1.13" [28.7mm]	5.0" [127mm]
1.5"	8.0" [203.2mm]	1.5" [38.1mm]	5.88" [149.4mm]
2"	9.0" [228.6mm]	2.0" [50.8mm]	7.5" [190.5mm]
3"	11.0" [279.4mm]	3.0" [76.2mm]	8.88" [225.6mm]
4"	13.0" [330.2mm]	4.0" [101.6mm]	9.88" [251mm]
6"	17.0" [431.8mm]	6.0" [152.4mm]	12.25" [311.2mm]
8"	20.0" [508mm]	8.0" [203.2mm]	15.5" [393.7mm]

300# / PN25

SIZE	A	ØB	C
1/2" / 15 mm	7.88" [200.2mm]	1.13" [28.7mm]	4.25" [108mm]
3/4" / 20 mm	8.25" [209.6mm]	1.13" [28.7mm]	4.25" [108mm]
1" / 25 mm	6.88" [174.8mm]	1.13" [28.7mm]	4.38" [111.3mm]
1.5" / 40 mm	7.5" [190.5mm]	1.5" [38.1mm]	6.25" [158.8mm]
2" / 50 mm	8.63" [219.2mm]	2.13" [54.1mm]	7.0" [177.8mm]
2.5" / 65 mm	11.38" [289.1mm]	3.0" [76.2mm]	8.44" [214.4mm]
3" / 80 mm	11.38" [289.1mm]	3.0" [76.2mm]	8.44" [214.4mm]
4" / 100 mm	13.25" [336.6mm]	4.0" [101.6mm]	10.5" [266.7mm]
6" / 150 mm	21.25" [539.8mm]	6.0" [152.4mm]	15.0" [381mm]
8" / 200 mm	22.88" [581.2mm]	7.5" [190.5mm]	17.0" [431.8mm]



F700TFE - Teflon® Lined

**Ordering Information** - create a finished sight flow p/n by selecting the required option characters shown below:

**F** \_\_\_\_\_ **O** \_\_\_\_\_

MODEL: \_\_\_\_\_

A = Flanged  
E = Flanged Teflon® lined

PRESSURE / INDICATOR: \_\_\_\_\_

A = 150# Plain  
B = 150# Flapper  
C = 150# Drip Tube  
D = 150# Rotor  
E = 300# Plain  
F = 300# Flapper  
G = 300# Drip Tube  
H = 300# Rotor  
3 = 150# Teflon® Lined

M = PN10 Plain  
N = PN10 Flapper  
P = PN10 Drip Tube  
Q = PN10 Rotor  
R = PN16 Plain  
S = PN16 Flapper  
T = PN16 Drip Tube  
U = PN16 Rotor  
V = PN25 Plain  
W = PN25 Flapper  
Y = PN25 Drip Tube  
Z = PN25 Rotor

SIZE: \_\_\_\_\_

A = .5" G = 4" M = 15 mm T = 80 mm  
B = .75" H = 6" N = 20 mm U = 100 mm  
C = 1" I = 8" P = 25 mm V = 150 mm  
D = 1.5" Q = 40 mm W = 200 mm  
E = 2" R = 50 mm  
Y = 2.5" S = 65 mm  
F = 3"

(For larger sizes, consult factory)

TEMPERATURE:  
\*A = 450°F [232°C] max (Flanged)  
B = 400°F [204°C] max (Teflon® Lined)

RETAINER / BOLTING MATERIAL (non-wetted):  
1 = Carbon Steel Painted (Standard)  
2 = 304 Stainless Steel

GASKET MATERIAL (wetted):  
1 = Buna [225°F / 107°C]  
2 = Viton® [400°F / 204°C]  
3 = Soft Teflon® [450°F / 232°C]  
4 = Silicone Rubber [450°F / 232°C]  
5 = Grafoil® [450°F / 232°C]  
6 = Tan Gylon® 3500 [450°F / 232°C]  
7 = Blue Garlock® 3000 [450°F / 232°C]  
8 = Ethylene Propylene - EPDM [300°F / 149°C]  
9 = Neoprene [250°F / 121°C]

BODY / FUSEVIEW™ MATERIAL (wetted):  
AA = Carbon Steel (body - ASTM A216 WCB)  
BB = 316 Stainless Steel\*\* (body - ASTM A351 CF8M)  
CC = Alloy C  
DD = Hastelloy® C276 or equal  
EE = Hastelloy® C-22® or equal  
AG = Carbon Steel Teflon® Lined with Glass Wetted Fuseviews™



**CANTY**

JM Canty Inc | Buffalo, NY USA  
JM Canty Intl Ltd | Dublin, Ireland

Ph: (716) 625 4227  
Ph: + 353 (01) 882 9621

Fax: (716) 625 4228  
Fax: +353 (01) 882 9622

www.jmcanty.com

\*\*Canty reserves the right to upgrade the Fuseviews™ to Hastelloy® C-family of alloys or equal at their own cost. All Registered Trademarks are the property of their respective owners.