

Data Sheet

J. M. CANTY FUSEVIEW™

Sugar Pan



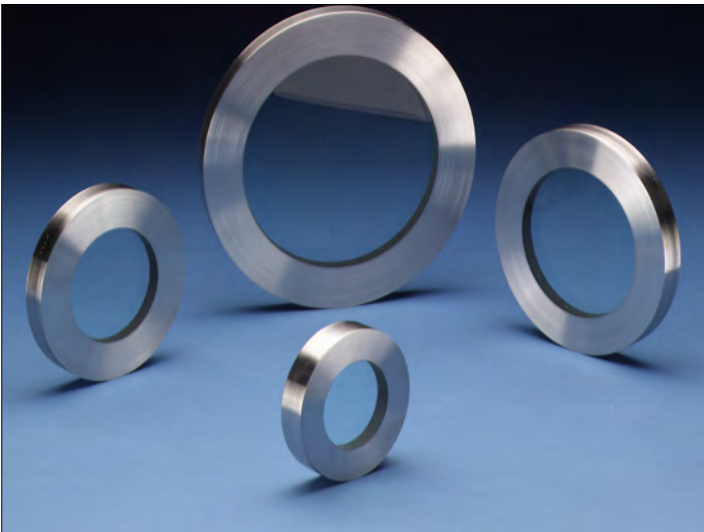
Supplied by

247able.com

Call us on +44 (0)118 916 9420 | Email info@247able.com

PROCESS TECHNOLOGY

FUSEVIEW™ - SUGAR PAN



SUGAR PAN - EVAPORATORS

CANTY Fuseview™ sight glasses have been engineered to meet all your process and safety needs. All standard Fuseviews™ feature Factory Mutual approval and were designed and tested to ensure the safest product available. CANTY can provide certification of material and testing if required, typical of ASME code requirements for process vessels.

THE CANTY ADVANTAGE

All CANTY sight glasses feature the Fuseview™ window. Our unique fused glass windows far exceed all conventional tempered glass windows in safety and performance. The Fuseview™ eliminates the chance of glass getting into the evaporators by over torque of the operators. If the operators do not torque tempered glass enough the evaporator will be less efficient, which is more common. By fusing glass to metal, a high pressure, high safety, hermetic seal is formed. The fused glass technology ensures safety with every Fuseview™. What's more, our windows can easily be removed for cleaning. CANTY windows do not have to be discarded, as do traditional tempered glass windows. Fuseview™ can be re-used again and again. The customer saves 1 cent for every gallon the pan boils at a lower degree of temperature.

APPLICATIONS

- Evaporator
- Centrifuge
- Replace Tempered Glass

RETURN ON INVESTMENT

ROI = 1 CENT / DEGREE (F) / GALLON

FEATURES

- Standard models feature FM approval!
- Extremely high strength due to radial compression on the hermetically sealed glass
- Eliminates chance of catastrophic failure due to bolt-up
- Very high impact strength and thermal shock resistance due to prestressing
- Operates under positive or negative pressure

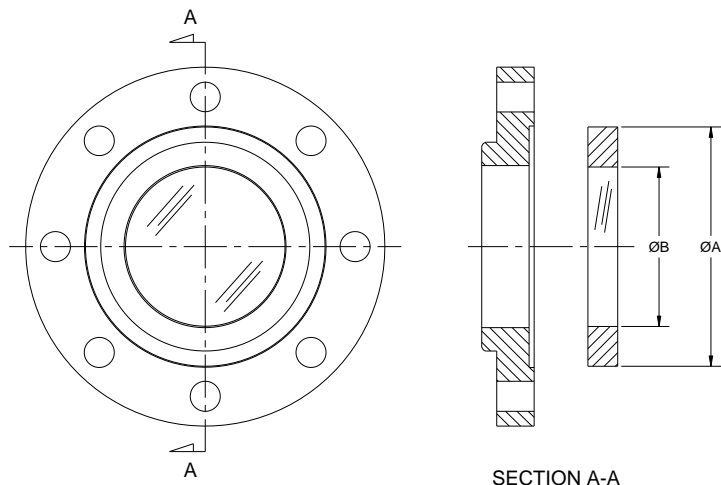
CANTY VS OTHER SIGHT GLASSES

- No bolt loading on glass. All the load is carried by the fusing ring so you can use whatever torque you need as specified by the gasket manufacturer and your process.
- The Fuseview™ allows the use of standard process gasket. No special gaskets are required.
- CANTY Fuseviews™ may be removed for cleaning and inspection. This is not allowed with ordinary glass, due to residual stresses incurred at bolt-up.
- No loss of glass temper over time!
- Unlike tempered glass, a Fuseview™ will not blowout if the surface is damaged.
- No shims, packing, or adjusting screws
- CANTY mounts to standard ANSI or DIN dimensions

FUSEVIEW™ SIGHT GLASS SPECIFICATIONS

ANSI Dimensions

SIZE	A	VIEW B	PRESSURE RATING PSI	TEMP RATING °F
1"	2.00"	1.13"	150/300/600	450
1.5"	3.00"	1.50"	150/300/600	450
2"	3.62"	2.13"	150/300/600	450
2.5"	4.00"	2.50"	150/300/600	450
3"	5.00"	3.00"	150/300/600	450
3.5"	5.50"	3.50"	150/300/600	450
4"	6.00"	4.00"	150/300/600	450
5"	7.50"	5.00"	150/300/600	450
6"	8.37"	6.00"	150/300/600	450
8"	10.50"	8.00"	150/300	400
10"	12.00"	9.50"	50/150	300



DIN Dimensions

SIZE mm	A mm	VIEW B mm	PRESSURE RATING BAR	TEMP RATING °C
25	68	38	10/16/25/40	232
32	76	38	10/16/25/40	232
40	88	51	10/16/25/40	232
50	92	54	10/16/25/40	232
65	122	76	10/16/25/40	232
80	127	76	10/16/25/40	232
100	152	102	10/16/25/40	232
125	191	127	10/16/25/40	232
150	213	152	10/16/25/40	232
200	267	203	10/16	204
250	305	241	10	150



Retrofit Cartridge Dimensions

SIZE	A	VIEW B	PRESSURE RATING PSI	TEMP RATING °F
2"	3.00"	2.00"	150/300/600	450
2.5"	4.50"	2.50"	150/300/600	450
3"	4.80"	3.00"	150/300/600	450
4"	5.90"	4.00"	150/300/600	450
4.5"	6.50"	4.50"	150/300/600	450
4.5"	6.75"	4.50"	150/300/600	450
4.5"	6.89"	4.50"	150/300/600	450
4.5"	7.00"	4.50"	150/300/600	450
5.6"	7.87"	5.60"	150/300	450
7.0"	9.50"	7.00"	150/300	400
7.3"	9.81"	7.30"	150/300	400

Ordering Information

HOW TO ORDER: Select the appropriate symbols and build a part number as shown:

EXAMPLE:

S1 - - - 1 - - - A0

PRESSURE:

- A = 150 PSI 1 = 10 BAR
- B = 300 PSI 2 = 16 BAR
- D = 600 PSI 3 = 40 BAR

SIZE:

- | ANSI | DIN | Retrofit (No retainer only) |
|-----------|-----------|-----------------------------|
| B = 1.0" | X = 25mm | D = 2.0" x 3.0" |
| C = 1.5" | Y = 32mm | G = 2.5" x 4.5" |
| E = 2.0" | Z = 40mm | 9 = 3.0" x 4.8" |
| F = 2.5" | 1 = 50mm | K = 4.0" x 5.9" |
| H = 3.0" | 2 = 65mm | L = 4.5" x 6.5" |
| J = 4.0" | 3 = 80mm | M = 4.5" x 6.75" |
| P = 5.0" | 4 = 100mm | N = 4.5" x 6.89" |
| R = 6.0" | 5 = 125mm | O = 4.5" x 7.0" |
| V = 8.0" | 6 = 150mm | Q = 5.6" x 7.87" |
| W = 10.0" | 7 = 200mm | S = 7.0" x 9.5" |
| | 8 = 250mm | T = 7.3" x 9.81" |

- RETAINER MATERIAL: (non-wetted)
- 0 = No flange
 - 1 = Carbon Steel
 - 2 = 316L Stainless Steel

- FINISH: (wetted) (non-wetted = 32 µin [.81 µm] Ra)
- 0 = 32 µin [.81 µm] Ra (standard)
 - B = 20 µin [.51 µm] Ra (BPE-SF1)
 - C = 15 µin [.38 µm] Ra
 - L = 20 µin [.51 µm] Ra Electropolished (BPE-SF5)
 - M = 15 µin [.38 µm] Ra Electropolished (BPE-SF4)

- FUSEVIEW™ MATERIAL: (wetted)
- A = Carbon Steel
 - B = 316L Stainless Steel*
 - C = Alloy C
 - D = Hastelloy® C276 or equal
 - E = Hastelloy® C22® or equal

All registered trademarks are the property of their respective owners.

* Cauty reserves the right to upgrade to Hastelloy® C-family of alloys or equal at their own cost.